



# **CATIA Metaphase Interface**

**CMI Release 9.3**

---

**Release Notes**

---

## Copyright

© 2000, 2008 T-Systems International GmbH.  
All rights reserved. Printed in Germany.

---

## Contact

T-Systems International GmbH  
Business Center EPDM/D  
Fasanenweg 5  
70771 Leinfelden-Echterdingen Germany

<http://www.cmi-support.com>

☎ +49 (0711) 972 - 49 758

✉ +49 (0711) 972 - 90 330

mail: [cmi\\_support@t-systems.com](mailto:cmi_support@t-systems.com)

---

## Manual History

Version	Date
9.3	March 2008

This edition obsoletes all previous editions.

---

## Trademarks

CATIA is a registered trademark of Dassault Systèmes.  
Metaphase is a registered trademark of Metaphase Technology, Inc.  
Teamcenter Enterprise is a registered trademark of Siemens PLM Corporation  
Names of other products mentioned in this manual are used only for identification purpose and may be trademarks of their companies.

---

# Preface

---

## About this Guide

This guide provides general release information for the CATIA Teamcenter Interface.

---

## Related Documents

The following manuals contain information about installation and administration of the CATIA Teamcenter Interface:

Manual Title	Release
<i>CATIA Teamcenter Interface Installation &amp; Administration Guide</i>	9.3
<i>CATIA Teamcenter Customizing Guide</i>	9.3
<i>CATIA Teamcenter User's Guide</i>	9.3

---

## Your Comments are Welcome

Your comments on our publications are welcome. Please write us at:

T-Systems International GmbH  
Solution Center PLM  
Fasanenweg 5  
70771 Leinfelden-Echterdingen

mail: [cmi\\_support@t-systems.com](mailto:cmi_support@t-systems.com)



---

# Table of Contents

---

<b>CHAPTER 1</b> .....	<b>1</b>
<b>PLATFORM SUPPORT</b> .....	<b>1</b>
SUPPORTED PLATFORMS.....	1
SUPPORTED TEAMCENTER RELEASES .....	1
SUPPORTED CATIA V4 RELEASES .....	1
SUPPORTED CATIA V5 RELEASES .....	1
<b>CHAPTER 2</b> .....	<b>3</b>
<b>FUNCTIONAL CHANGES</b> .....	<b>3</b>
NEW FUNCTIONS FOR PLM MANAGED CATALOGS .....	3
GET ORIGINAL GEOMETRY ENHANCEMENT .....	4
NEW CATIA VBA APIS.....	4
ENHANCED ATTRIBUTE MAPPING OPTIONS BETWEEN CATIA AND TEAMCENTER.....	5
CONTROL BOM / NON BOM FROM TEAMCENTER .....	5
ENHANCED CUSTOMIZING OPTIONS FOR WORKBENCH EXPANDS .....	5

---



---

# CHAPTER 1

## Platform Support

---

### Supported platforms

HP-UX 11  
Sun Solaris 8<sup>1</sup>  
IBM AIX 5.1 32 bit / 64 bit  
SGI Irix 6.5  
Windows XP 32 bit / 64 bit

---

### Supported Teamcenter Releases

Teamcenter 5.0  
Teamcenter 5.1  
Teamcenter 2007

---

### Supported Catia V4 Releases

CATIA V4.2.0 – V4.2.4

---

### Supported Catia V5 Releases

CATIA V5R16  
CATIA V5R17  
CATIA V5R18

---

<sup>1</sup> Teamcenter 2007: Solaris 10



---

# CHAPTER 2

## Functional Changes

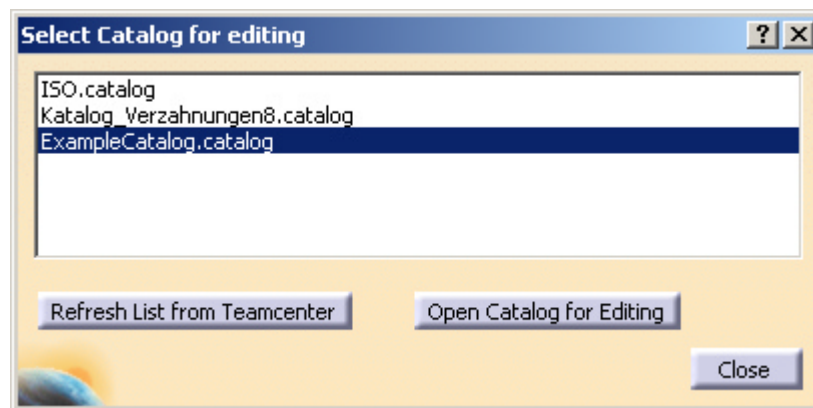
---

### New functions for PLM managed Catalogs



#### **Catalog Read Command**

Opens a CATCatalog from Teamcenter for editing



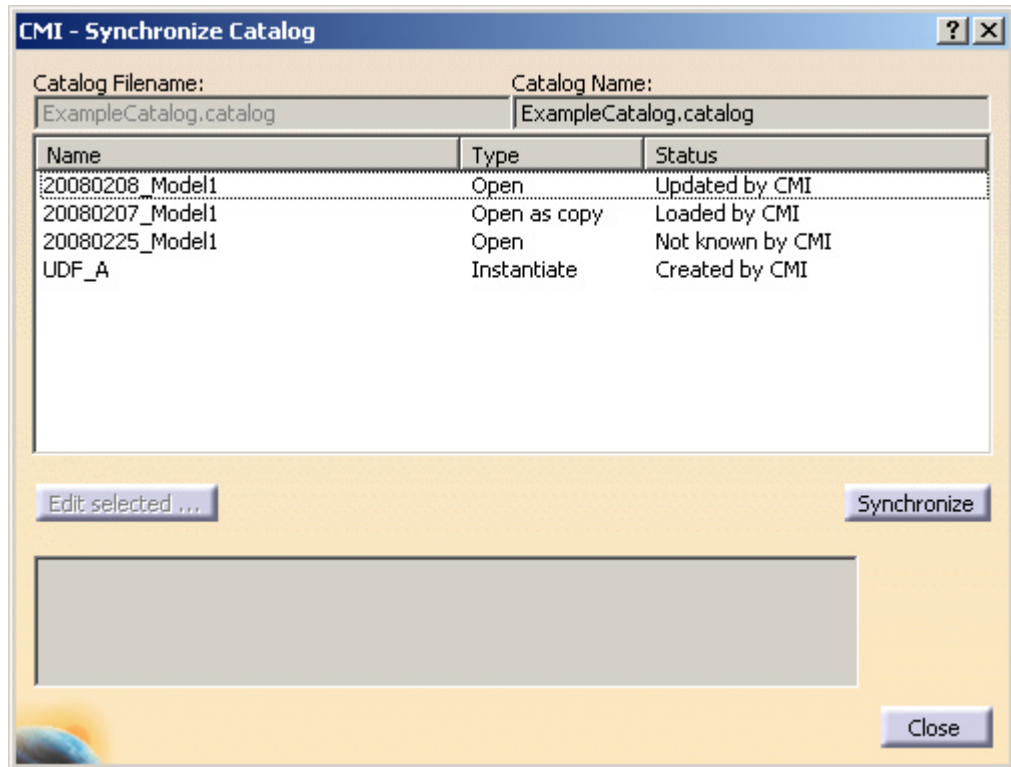
To enable this command set CMI\_ENABLE\_CMICATALOGREADCMD=ON in the Catia Environment.



#### **Catalog Create Update Command**

Create or Update a Teamcenter managed CATCatalog

This function allows you to build a Catalog from Parts that were read from Teamcenter. It manages the attributes that are needed for the *Manage Catalogs* command that was introduced in CMI 9.0.



To enable this command set CMI\_ENABLE\_CMICATALOGUPDCRECMD=ON in the Catia Environment.

## Get Original Geometry enhancement

A CATProduct can be selected with the *Get Orig. Geometry* function, in order to retrieve all geometry in the product structure from Teamcenter.

*Get Orig. Geometry* is an optional feature that is used with “Only CGR” or “Transfer Model Files = False” options in the CMI Workbench. It is enabled with CMI\_ENABLE\_GETORIGGEOCMD=ON in the Catia Environment.

## New Catia VBA APIs

SupplyAdditionalFileForPrdToTC

SupplyAdditionalFileForDrwToTC

APIs are provided to hand down a file (eg. Non-Catia) to Teamcenter via CMI. A CATProduct, CATPart or CATDrawing can be given on the Catia side, so that the file can be associated to a business item on the Teamcenter side.

```
HRESULT InCMIArchive( in CATIAProduct ipiProduct,
                    inout boolean bInCMIArchive)
```

API to determine if a CATProduct is Part of a CMI Archive.

These functions are documented in more detail in the *Customizing Guide*

---

## Enhanced Attribute mapping options between Catia and Teamcenter

New customizing options allow the update of Catia standard properties into Teamcenter; see

x3SetCATIARevision  
x3SetCATIANomenclature  
x3SetCATIADefinition  
x3SetCATIADescription  
in *Customizing Guide*

Enhanced customizing option allows to remove User Defined Properties from a Catia object; see

x3SendUserDefPropsExt  
in *Customizing Guide*

---

## Control BOM / Non BOM from Teamcenter

The BOM / Non BOM designation for CATParts in the Synchronize can be controlled from Teamcenter.

see

x3GetBomType  
in *Customizing Guide*

BOM / No BOM decides if a CATPart in Catia is mapped to its own Teamcenter Part.

CMI\_GET\_BOMTYPE\_FROM\_TC = ON

---

## Enhanced customizing options for Workbench expands

Easy implementation of custom Assembly Expands in the Workbench by an Expand identifier string that is passed to low level customizable CMI expand methods.

See

g3GetAllModelsOfDocCus  
g3GetPartsInAssSetCus  
g3GetPartsInAssemblyCu  
in the *Customizing Guide*